

KCL

KPV25~40 + DVQ20

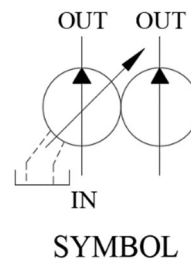
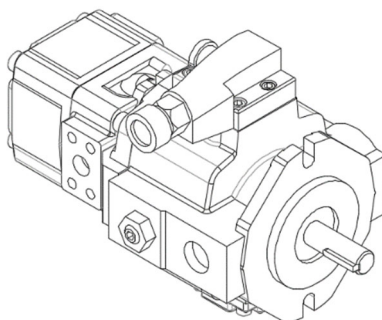
Variable-Fixed Combination Pump Ordering Code

KPV-25 + DVQ20 *

KPV-32 + DVQ20 *

KPV-36 + DVQ20 *

KPV-40 + DVQ20 *



Features 特點

- ❖ 高壓變量與高壓定量組合泵，油壓系統設計更彈性。
- ❖ 高壓變量單元，採固定及活動雙軸環設計，內軸環作動滑順靈敏，穩定性高；
- ❖ 噪音低，高效率，高性能，提高耐磨，耐疲勞及高抗污性能。

Model 型號	Pump capacity 流量		Operating Pressure 壓力		Weight 重量(Kg)
	P1(cm ³ /rev)	P2 (cm ³ /rev)	P1 Mpa(Kgf/cm ²)	P2 Mpa(Kgf/cm ²)	
KPV25~40+DVQ20	25, 32 36, 40	⑨	1.5~21 (15.3~214.2)	⑨	40.5

Ordering Code 訂購指引

KPV - 36 - F - 1 - B 12 - 01 - 01 - DVQ20-26

① ② ③ ④ ⑤ ⑥ ⑦ ⑧ ⑨

① KPV 型號：高壓變量葉片泵

② 流量(cm³/rev)：25，32，36，40

③ F：單座壓力閥

④ 壓力級數

1、1.5~14 Mpa (15.3~142.8 Kgf/cm²)

2、2.0~21 Mpa (20.4~214.2 Kgf/cm²)

⑤ B：SAE-B 規格，ø101.6 安裝

⑥ 轉速

12：1200 rpm

15：1500 rpm 18：1800 rpm

⑦ 轉軸

01：ø22.23 (長鍵)

02：SAE-B - 13 Tooth Splined 16/32 dp

⑧ 管口牙規格

01：S= RC 1 1/4" ,P= RC 1" ,DR= RC 3/8"

02：S=#24 SAE, P=#16 SAE, DR=#8 SAE

⑨

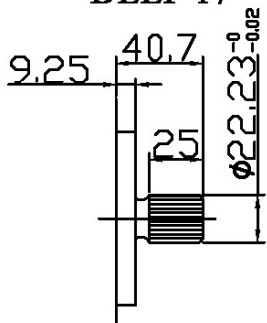
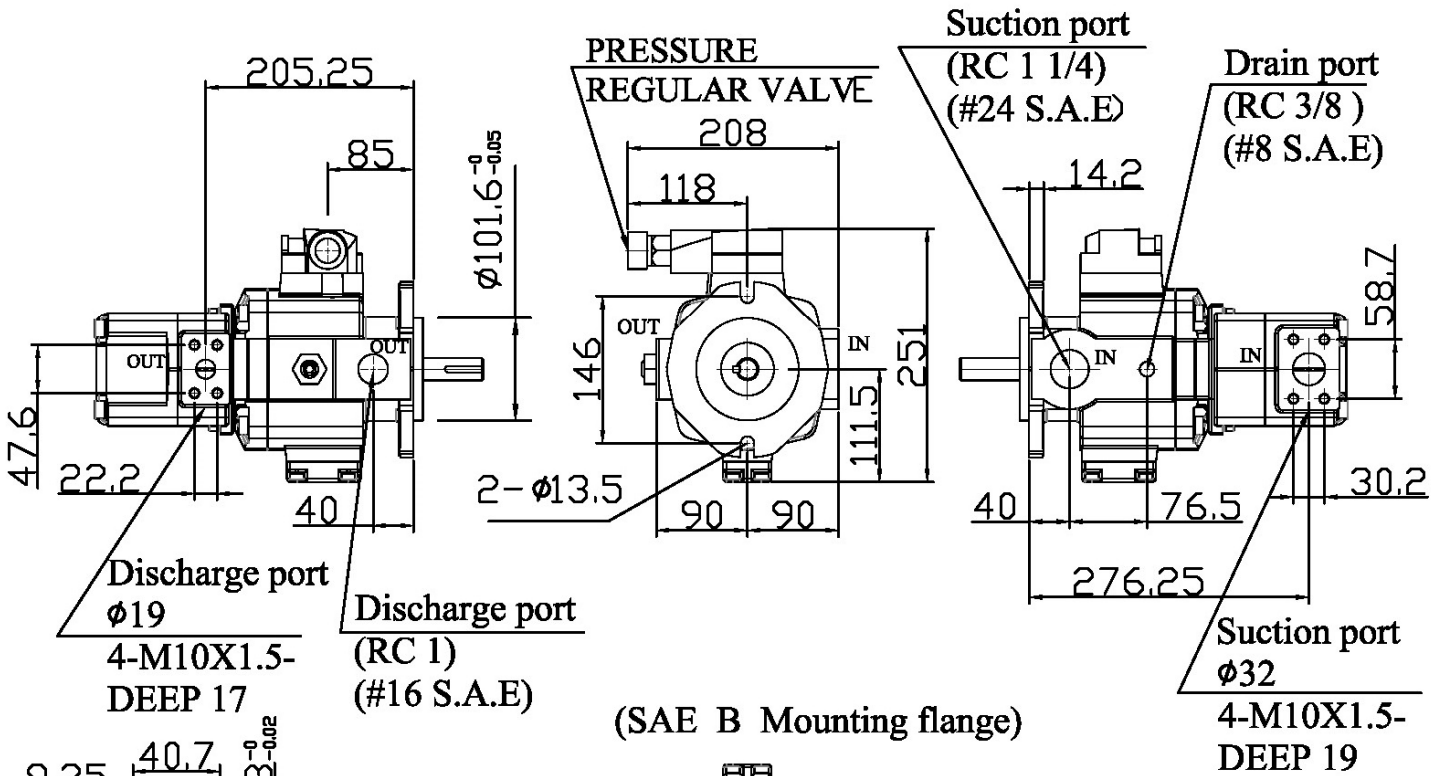
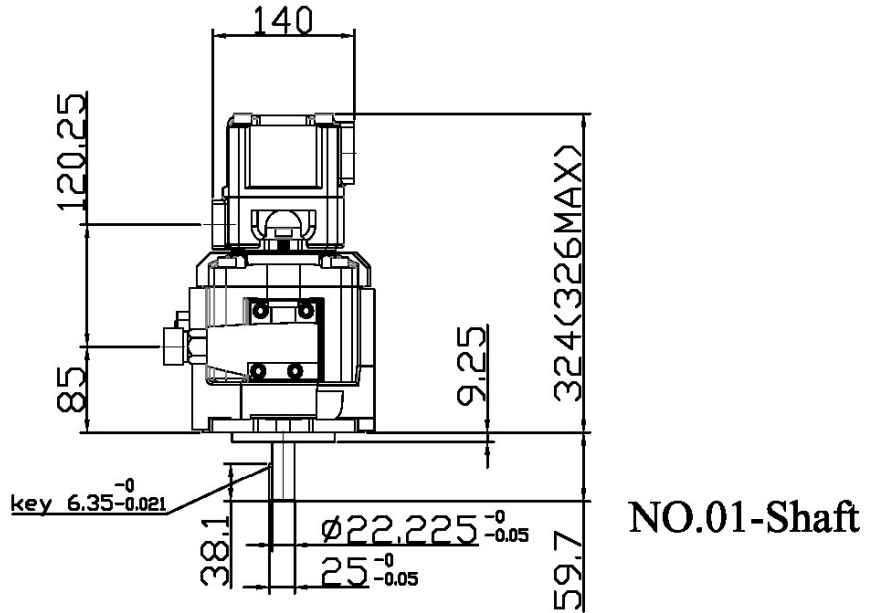
Model	Delivery Flow (l/min) at no-load pressure 無負壓的傳輸流量				Running Speed (rpm) 轉速		Max Pressure(Kgf /cm2) 最大壓力	
	Running Speed (rpm) 轉速				Max	Min	Cont.	Peak
	1000	1200	1500	1800				
DVQ20	06	6.2	7.4	9.3	1800	800	210	260
	08	8.1	9.7	12.1				
	11	11.2	13.4	16.8				
	14	14.3	17.1	21.5				
	17	17.1	20.5	25.6				
	19	19.2	23.0	28.8				
	23	23.3	27.9	34.9				
	26	26.1	31.3	39.1				
	32	32.1	38.3	47.6				
	34	34.1	40.8	50.4				
	38	38.1	45.9	-	1500	-	175	240
	44	44.1	52.9	-				

KCL

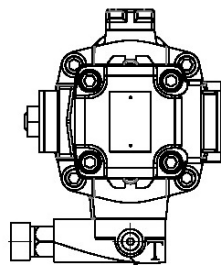
KPV25~40 + DVQ20

Variable-Fixed Combination Pump Dimensional Drawing

- KPV-25+DVQ20 *
- KPV-32+DVQ20 *
- KPV-36+DVQ20 *
- KPV-40+DVQ20 *



SAE-B splined shaft
 Diametral Pitch : 16/32
 Pressure Angle : 30°
 No. of Teeth : 13
 NO.02-Shaft



* Shock Clipper port
 Should be plumbed
 to tank to activate
 shock clipper

Shock Clipper port
 (RC 1/4) , (#6 S.A.E)

* (須接獨立油管回油箱)