

66SMP – E132 – E132 – 1 R 00 – A 1 – M0 *

①

②

③ ④ ⑤

⑥ ⑦

⑧

⑨

① Series

66 : 6.5" 安裝(雙聯泵)

SMP : 節能使用泵

② Cam ring for "P1" & "P2" (流量)

Volumetric displacement (cm³/rev)

E132=132.3 E181=180.7

E142=142.4 E197=196.7

E159=158.5 E213=213.3

E165=164.8 E227=227.1

③ Type of shaft (心軸種類)

1= Keyed (Ø38.1 key 9.52 x 55.0)

2= Keyed (Ø45.0 key 14.0/9.0 x63)

3= Splined (12/24dp. 17 teeth)

5= Keyed (Ø44.45 key11.11x63.5)

④ Direction of rotation (轉向)

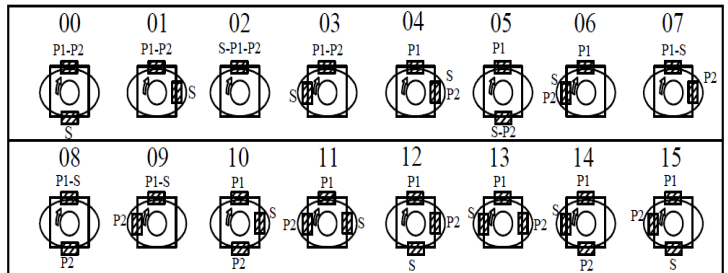
(view on shaft end)

R = clockwise (正轉)

L = counter-clockwise(反轉)

⑤ Porting combination (油口組合, 面對心軸)

00 – standard



⑥ Design letter

⑦ Seal class

1= S1 (for mineral oil)

4= S4 (for fire resistant fluids)

5= S5 (for mineral oil and fire-resistant fluids)

⑧ Mounting w/ connection variables

M0 = 公制牙

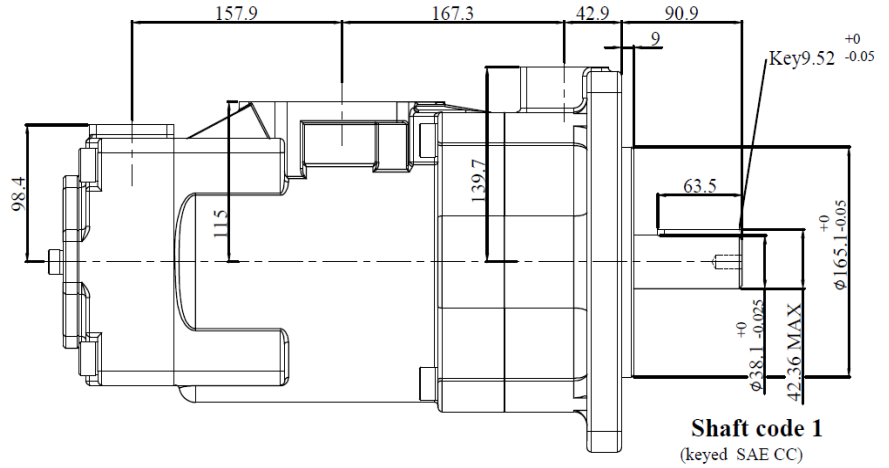
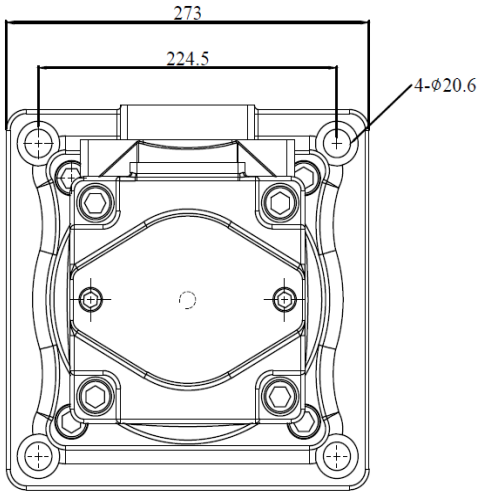
P1 & P2 = 1 1/2" S = 4"

⑨ Modifications

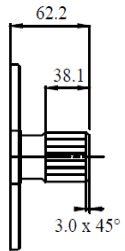
Operating Characteristics – Typical [24 cSt]

(泵重 : 102.4 Kg)

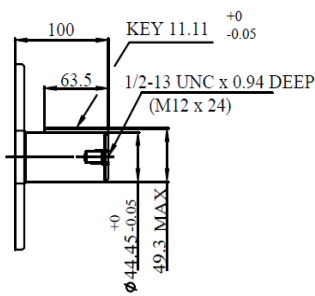
| Pressure Port | Series | Volumetric Displacement Vp Cm ³ /rev | Flow qve = 1500 rpm (ℓ/min) | | | Input power P = 1500 rpm (KW) | | | P Max Kgf/cm ² | Max r.p.m |
|---------------|--------|--|----------------------------------|-----------|-----------|------------------------------------|-----------|-----------|------------------------------|--------------|
| | | | P=0 bar | P=140 bar | P=240 bar | P=7 bar | P=140 bar | P=300 bar | | |
| P1~P2 | E132 | 132.3 | 198.5 | 188.5 | 181.3 | 5.2 | 49.4 | 82.6 | 240 | 2200 |
| | E142 | 142.4 | 213.6 | 203.6 | 196.5 | 5.4 | 52.9 | 88.7 | | |
| | E159 | 158.5 | 237.7 | 227.7 | 220.6 | 5.7 | 58.5 | 98.3 | | |
| | E165 | 164.8 | 247.2 | 237.2 | 230.1 | 5.8 | 60.8 | 102.1 | | |
| | E181 | 180.7 | 271.1 | 261.1 | 254.0 | 6.1 | 66.4 | 106.9 | | |
| | E197 | 196.7 | 295.0 | 285.0 | 277.9 | 6.4 | 71.9 | 121.3 | | |
| | E213 | 213.3 | 319.9 | 309.9 | 302.8 | 6.7 | 77.7 | 131.2 | | |
| | E227 | 227.1 | 340.6 | 330.6 | 323.5 | 6.9 | 82.6 | 139.5 | | |



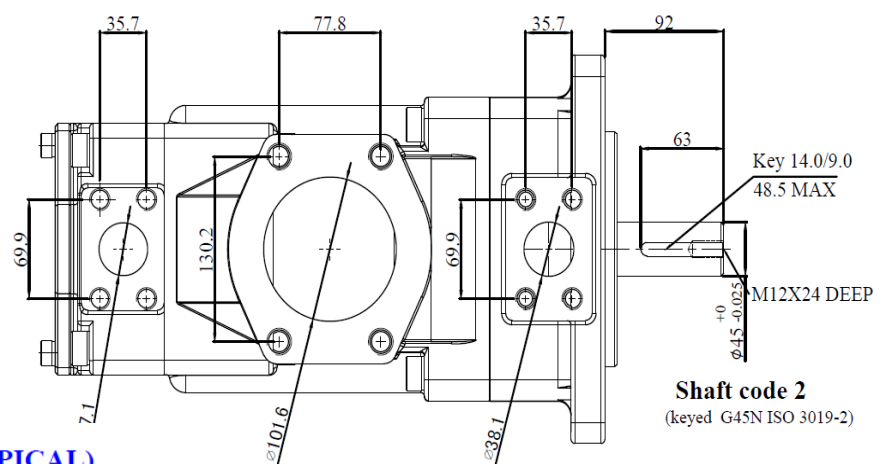
Shaft code 1
(keyed SAE CC)



Shaft code 3
SAE CC Splined shaft
Class 1- J498b
12/24dp. 17 teeth
30° pressure angle
Flat root side fit

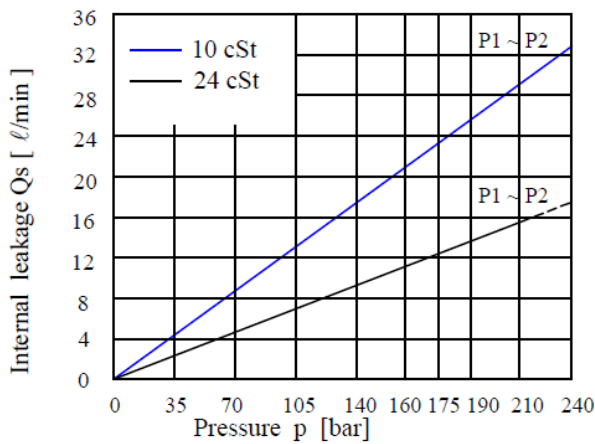


Shaft code 5
(keyed SAE D&E)



Shaft code 2
(keyed G45N ISO 3019-2)

INTERNAL LEAKAGE (TYPICAL)

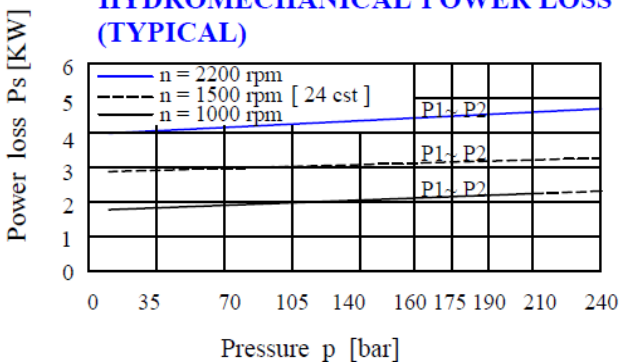


| 心軸扭力限制 (m/rev x bar) | | | |
|----------------------|------------|---------|-------------|
| Shaft | Vi x P max | Copling | Vi x P max. |
| 1 | 90380 | SAE-B | 20600 |
| 2 | 114600 | SAE-BB | 32670 |
| 3 | 126800 | | |
| 5 | 110840 | | |

Do not operate pump more than 5 seconds at any speed or viscosity if internal leakage is more than 50 % of theoretical flow.

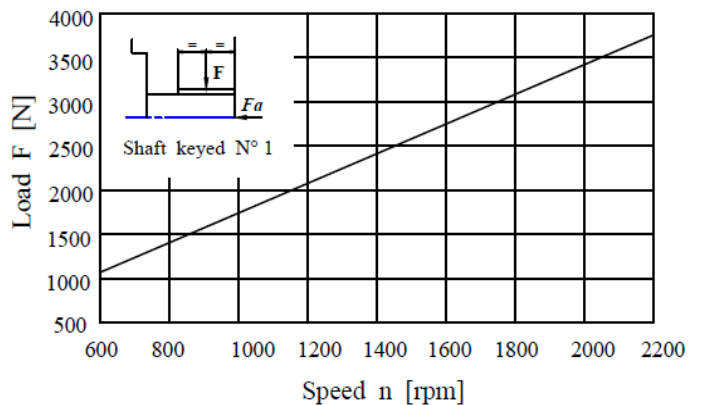
Total leakage is the sum of each section loss at its operating conditions.

HYDROMECHANICAL POWER LOSS (TYPICAL)



Total hydromechanical power loss is the sum of each section at its operating conditions.

PERMISSIBLE RADIAL LOAD



Maximum permissible axial load Fa = 2000 N