

**5SMP1 – C58 – 1 – R 00 – A**

① ② ③ ④ ⑤ ⑥

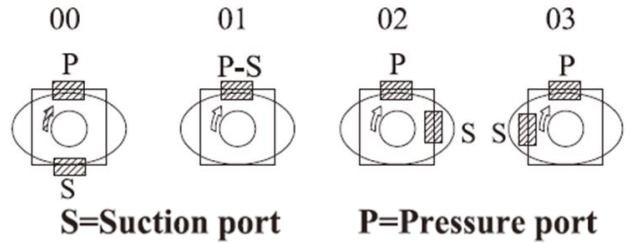
① **5SMP1 系列**：適用低轉速節能定量葉片泵  
**5**：5" 安裝，**SMP**：節能使用泵

② **Cam ring for "P1" (P1 流量)**  
 Volumetric displacement (cm<sup>3</sup>/rev)  
 C58=58.3      C70=70.3  
 C64=64.8      C79=79.3

③ **Type of Shaft (心軸種類)**  
 1、Keyed (Ø31.75 key7.94)

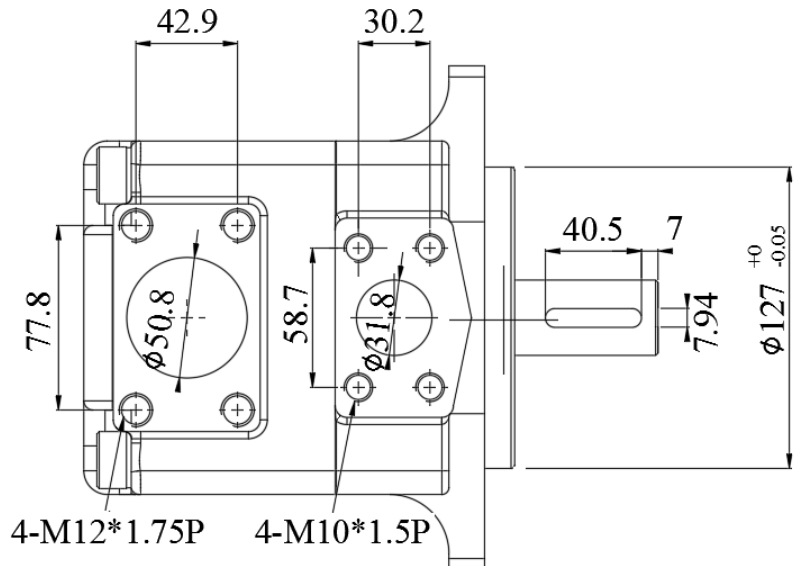
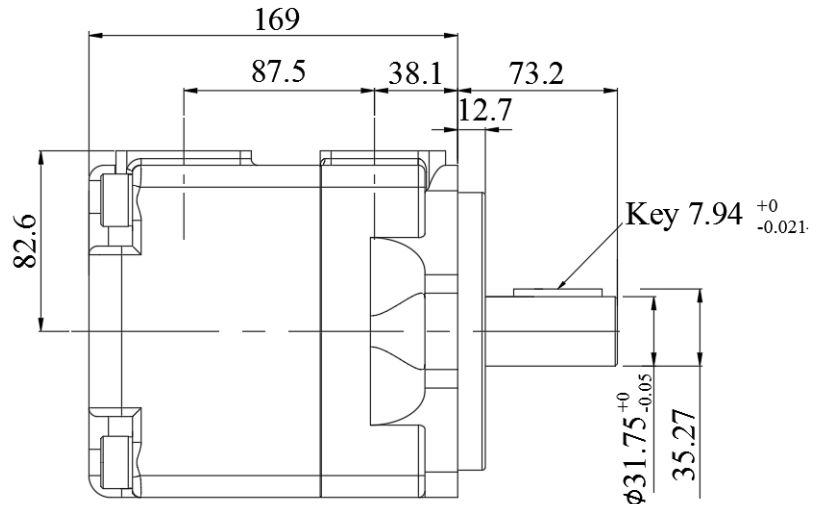
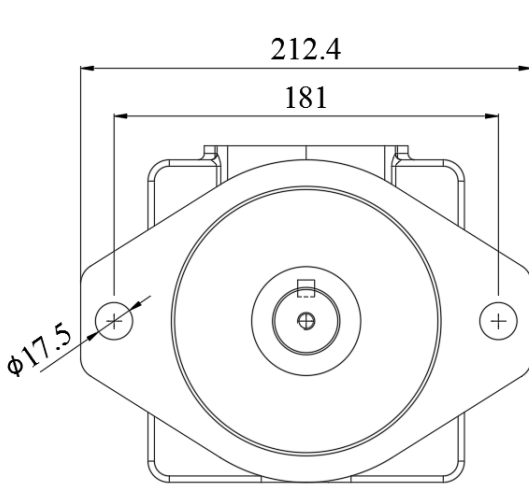
④ **Rotation (轉向，面對心軸)**  
 R：Clockwise (正)  
 L：Anti-Clockwise (反)

⑤ **Porting combination (油口方向)**  
 00 = standard



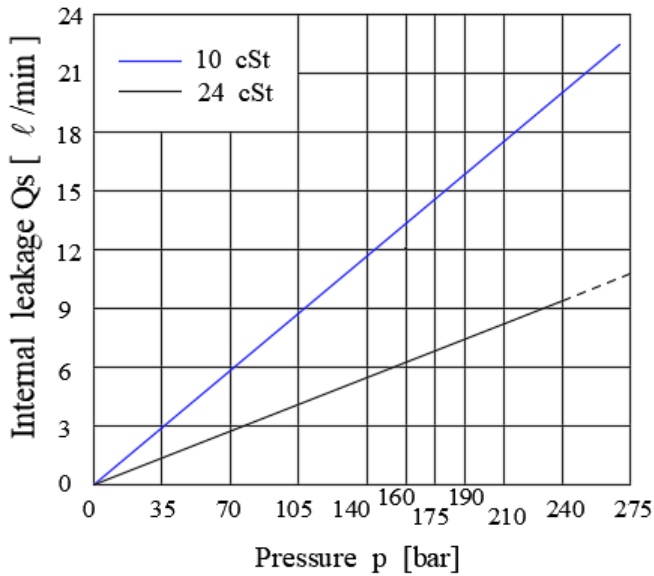
⑥ Design letter

**5SMP1 Dimensional Drawing**



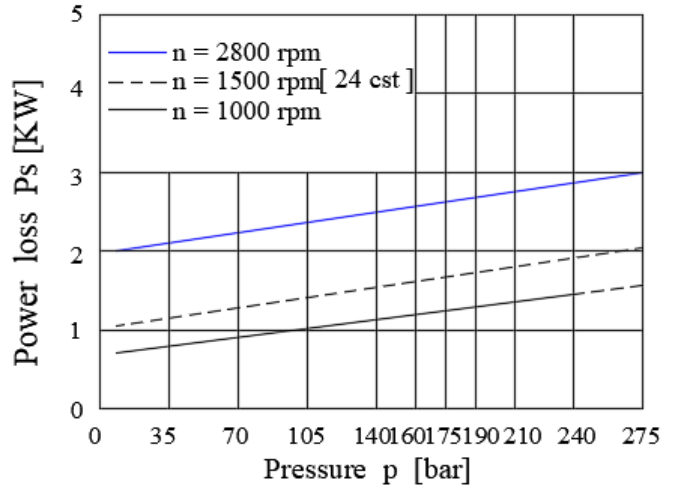
心軸扭力限制 ( mL/rev x bar )		
Pump	Shaft	Vp x P max
5SMP1	1	34590

**INTERNAL LEAKAGE (TYPICAL)**

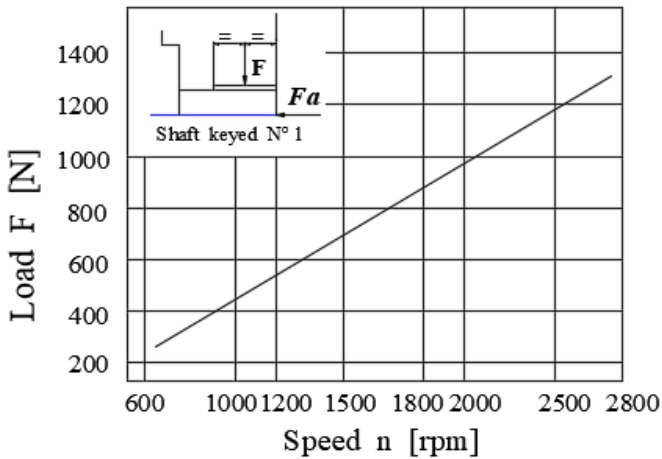


Do not operate pump more than 5 seconds at any speed or viscosity if internal leakage is more than 50 % of theoretical flow.

**HYDROMECHANICAL POWER LOSS (TYPICAL)**



**PERMISSIBLE RADIAL LOAD**



Maximum permissible axial load  $F_a = 800$  N

RPM	Oil Temperature	Oil Viscosity	Remark
1800	40	VG32	泵重 26.5 Kg

Model	流量	0 Bar	140 Bar	240 Bar	P Max Bar (10 秒)	Max RPM
58	58.3 cc	104.9	99.5	95.0	275	2800
63	63.8 cc	114.8	109.3	104.8		
70	70.3 cc	126.5	121.1	116.6		
79	79.3 cc	142.7	137.3	132.8		2500