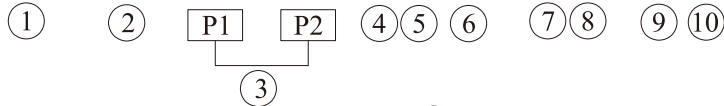


KT67BB **W** - **B08** - **B08** - **1** **R** **00** - **A** **1** - **11** *



- ① **Series- SAE B 2 bolts**
Mounting flange J744c
- ② **Use for severe duty shaft only**
- ③ **Cam ring for " P1 " " P2 "**
Volumetric displacement (cm³/rev)

B02=5.7	B09=28.0
B03=9.8	B10=31.8
B04=12.8	B11=34.9
B05=15.9	B12=40.9
B06=19.8	B14=45.1
B07=22.5	B15=50.0
B08=24.9	

- ⑥ **Porting combination**
00-standard
- ⑦ **Design letter**
- ⑧ **Seal class**
1-S1 (for mineral oil)
4-S4 (for fire resistant fluids)
5-S5 (for mineral oil and fire resistant fluids)

⑨ **Mounting W/connection variables**

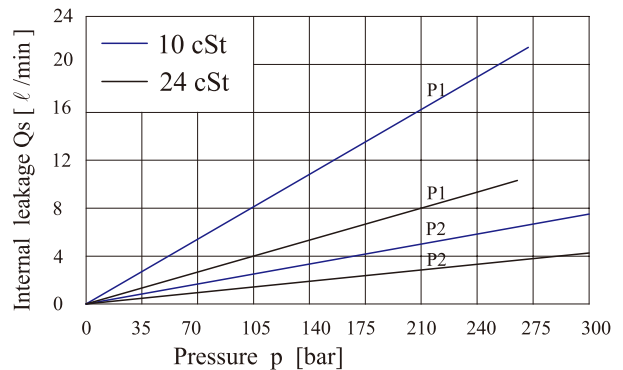
P1=1" , P2=3/4" , S=2 1/2"	
Unc	Metric
11	M1

- ④ **Type of shaft**
1-Keyed(no SAE) **W version**
3-splined (SAE BB) 2-Keyed(SAE BB)
5-splined(SAE B)

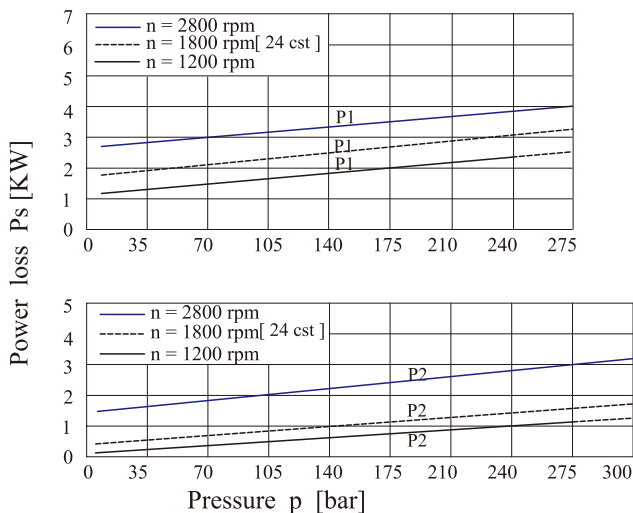
⑩ **Modifications**

- ⑤ **Direction of rotation(view on shaft end)**
R=clockwise
L=counter-clockwise

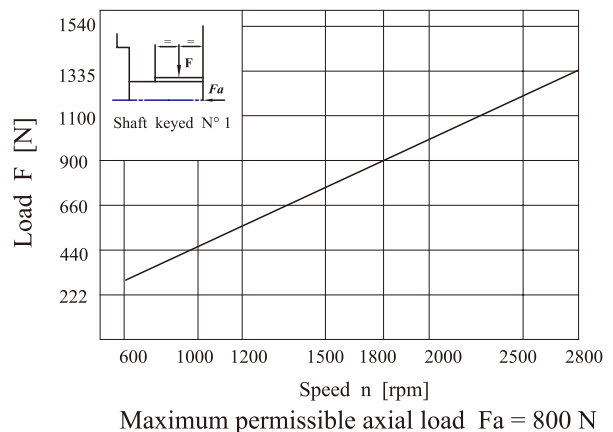
INTERNAL LEAKAGE (TYPICAL)



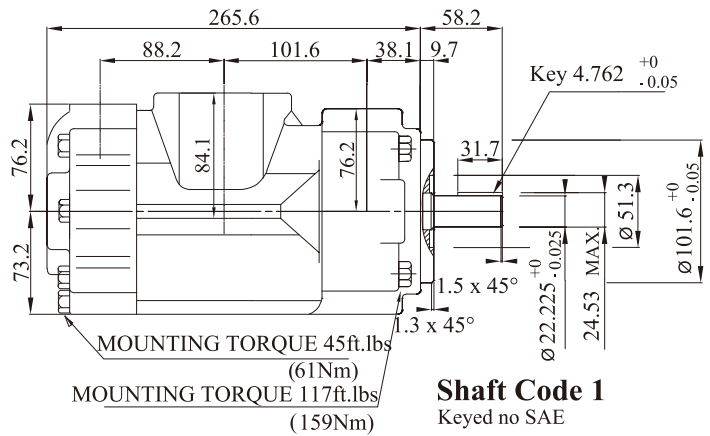
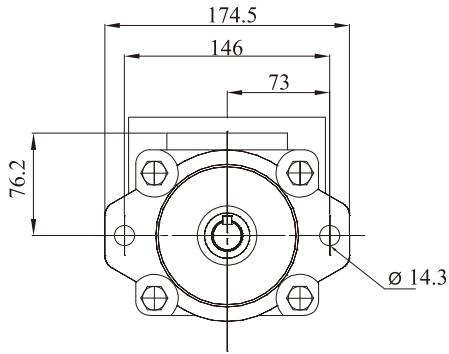
HYDROMECHANICAL POWER LOSS (TYPICAL)



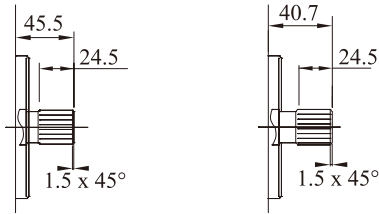
PERMISSIBLE RADIAL LOAD



Total hydromechanical power loss is the sum of each section at its operating conditions.



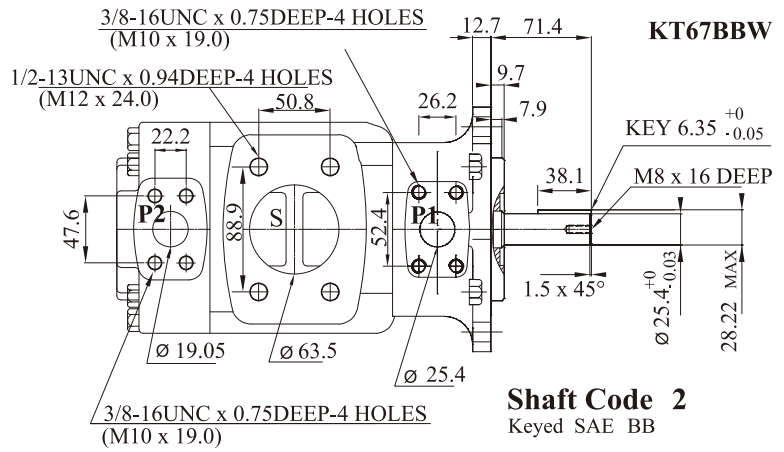
Shaft Code 1
Keyed no SAE



Shaft code 3
SAE BB splined shaft
Class 1-J498 b 16/32dp.
-15 teeth 30° pressure
angle flat root side fit

Shaft code 5
SAE B splined shaft
Class 1-J498 b 16/32dp.
-13 teeth 30° pressure
angle flat root side fit

Shaft torque limits (mℓ/rev x bar)		
Pump	Shaft	Vp x p max.(P1+P2)
KT67BB	1	14300
	2	21420
	3	32670
	5	20600



Shaft Code 2
Keyed SAE BB

OPERATING CHARACTERISTICS - TYPICAL (24 cST) (input power p (kw) for one cartridge only)

Pressure Port	Series	Volumetric Displacement Vp	Flow q & n=1800 rpm			Input power p & n=1800rpm			P Max Kg/cm ²	Max r.p.m
			(ℓ/min)	(KW)	(KW)	(KW)	(KW)			
P1 ~ P2		cm ³ /rev	P=0 bar	P=140 bar	P=300 bar	P=7 bar	P=140 bar	P=300 bar	300	2800
	B02	5.7	10.4	8.8	6.8	0.55	2.99	6.40		
	B03	9.8	17.6	15.9	14.0	0.63	4.65	10.25		
	B04	12.8	23.0	21.4	19.4	0.70	5.89	13.13		
	B05	15.9	28.6	26.9	25.0	0.76	7.17	16.12		
	B06	19.8	35.6	33.9	32.0	0.84	8.79	19.88		
	B07	22.5	40.4	38.8	36.8	0.89	9.91	22.47		
	B08	24.9	44.7	43.1	41.1	0.94	10.9	24.78		
	B09	28.0	50.3	48.6	47.0	1.01	12.19	27.77		
	B10	31.8	57.2	55.5	53.5	1.11	13.75	31.42		
	B11	34.9	62.9	61.2	59.3	1.15	15.04	32.22		
	B12	40.9	73.7	72.1	70.1	1.28	17.56	37.71		
B14	45.1	80.8	79.2	77.0	1.36	19.23	41.37	280		
B15	50.0	89.8	88.3	86.5 1)	1.47	21.28	42.76 1)			

1) B15=280 bar max. int.

--Not to use because internal leakage greater than 50% theoretical flow.
Min Speed : 600 rpm