

**KT6D \* - 045 - 1 R 00 - B 1 \***  
 ① ② ③ ④ ⑤ ⑥ ⑦ ⑧ ⑨

① **Series**

② **Y - Metric port connection** (not for code Q)  
 Omit for UNC

③ **Cam ring**

Volumetric displacement (cm<sup>3</sup>/rev)

014=47.6	035=111.0
017=58.2	038=120.3
020=66.0	042=136.0
024=79.5	045=145.7
028=89.7	050=158.0
031=98.3	061=190.5

④ **Type of shaft**

- 1 = keyed (SAE C)
- 2 = keyed (no SAE)
- 3 = splined (SAE C)
- 4 = splined (no SAE)

⑤ **Direct. of rotation**  
 (view on shaft end)

- R=clockwise
- L=counter-clockwise

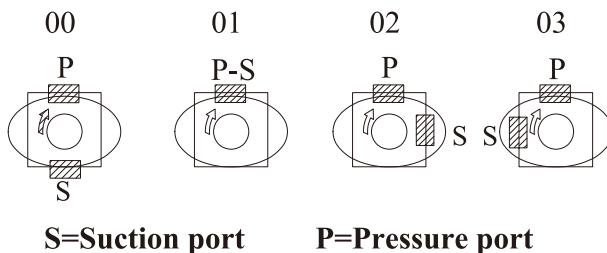
⑥ **Porting combination**  
 00=Standard

⑦ **Design letter**

⑧ **Seal class**

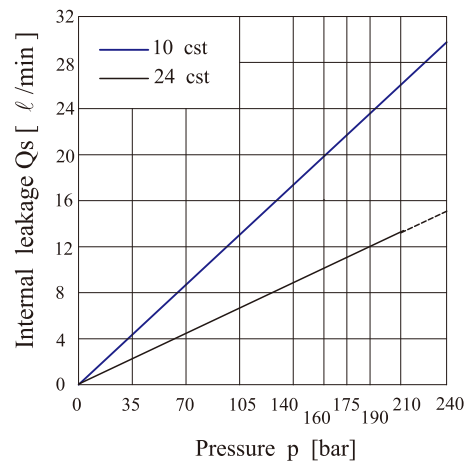
- 1 = S1 (for mineral oil)
- 4 = S4 (for fire resistant fluids)
- 5 = S5 (for mineral oil and fire resistant fluids)

⑨ **Modifications**

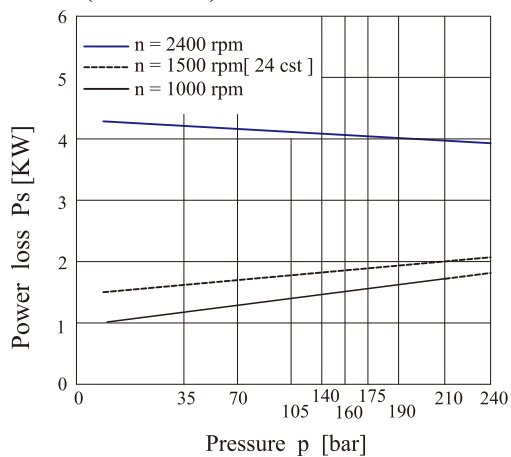


**S=Suction port      P=Pressure port**

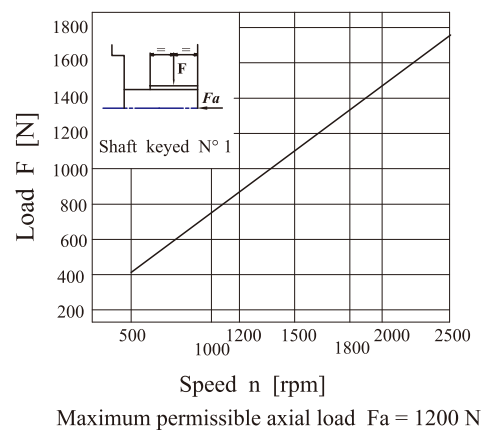
**INTERNAL LEAKAGE (TYPICAL)**

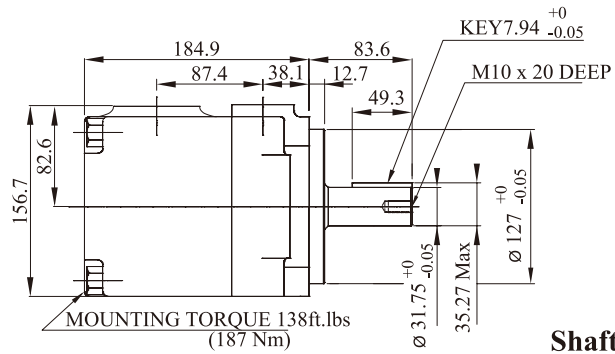
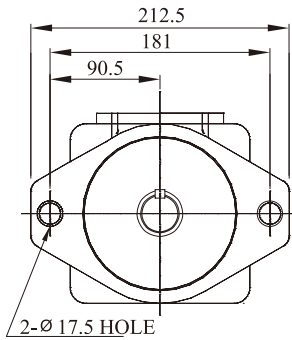


**HYDROMECHANICAL POWER LOSS (TYPICAL)**

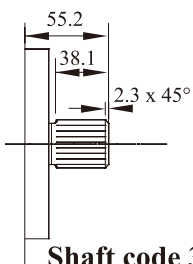


**PERMISSIBLE RADIAL LOAD**

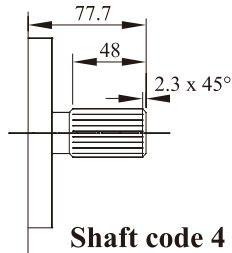




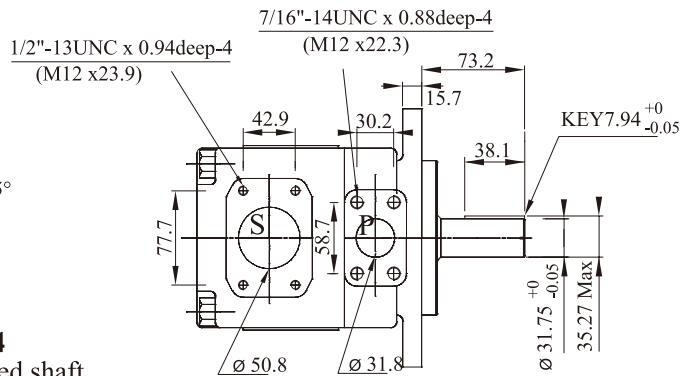
**Shaft Code 1**  
(Keyed SAE C)



**Shaft code 3**  
SAE C splined shaft  
Class 1 - J498 b  
12/24 dp. -14 teeth  
30° pressure angle  
Flat root side fit.



**Shaft code 4**  
no SAE splined shaft  
Class 1 - J498 b  
12/24 dp. -14 teeth  
30° pressure angle  
Flat root side fit.



**Shaft Code 2**  
(Keyed no SAE)

Shaft torque limits (mℓ/rev x bar)		
Pump	Shaft	Vp x p max
KT6D	1	43283
	2	34590
	3	61200
	4	61200

### OPERATING CHARACTERISTICS - TYPICAL [24 cSt]

Series	Volumetric Displacement Vp	Speed n [R.P.M]	Flow qve [ ℓ/min ]=1500 rpm			Input power P [KW]=1500 rpm			P Max Kg/cm <sup>2</sup>	Max r.p.m
			p = 0 bar	p = 140 bar	p = 240 bar	p = 7 bar	p = 140 bar	p = 240 bar		
014	47.6mℓ/rev	1500	71.4	62.1	55.9	2.3	18.5	30.6	240	2500
017	58.2mℓ/rev	1500	87.3	78.0	71.8	2.5	22.2	37.0		
020	66.0mℓ/rev	1500	99.0	89.7	83.5	2.8	24.9	41.7		
024	79.5mℓ/rev	1500	119.3	110.0	103.8	3.0	29.6	49.8		
028	89.7mℓ/rev	1500	134.5	125.2	119.0	3.2	33.2	55.9		
031	98.3mℓ/rev	1500	147.5	138.1	131.9	3.3	36.2	61.0		
035	111.0mℓ/rev	1500	166.5	157.2	151.0	3.5	40.7	68.7		
038	120.3mℓ/rev	1500	180.4	171.1	164.9	3.7	43.9	74.3		
042 1)	136.0mℓ/rev	1500	204.0	194.7	188.5	4.0	49.4	83.7		
045 1)	145.7mℓ/rev	1500	218.5	209.2	203.0	4.1	52.8	89.5		
050 1)	158.0mℓ/rev	1500	237.0	227.7	224.0 2)	4.4	57.0	85.0 2)		
061 1)	190.5mℓ/rev	1500	285.7	278.0 3)	—	4.6	60.6 3)	120		

1) 042 - 045 - 050 - 061 = 2200 R.P.M.max    2) 050 = 210 bar max. int.    3) 061 = 120 bar max. int.    Min Speed : 600 rpm