

KT6C * 014 - 1 R 00 - B 1 *
 ① ② ③ ④ ⑤ ⑥ ⑦ ⑧ ⑨

① **Series**

② **Y-** Metric port connection ,
 Omit for UNC

③ **Cam ring**

Volumetric displacement (cm³/rev)

005=17.2	017=58.3
006=21.3	020=63.8
008=26.4	022=70.3
010=34.1	025=79.3
012=37.1	028=88.8
014=46.0	031=100.0

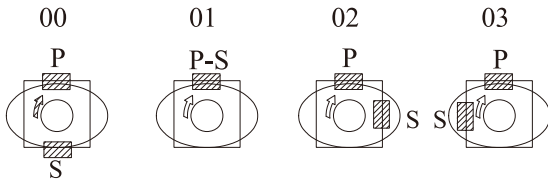
④ **Type of shaft**

1= keyed (SAE B)

2= keyed (no SAE)

3= Splined (SAE B)

4= Splined (SAE BB)



S=Suction port

P=Pressure port

⑤ **Direction of rotation**

(view on shaft end)

R=clockwise

L=counter-clockwise

⑥ **Porting combination**

00=standard

⑦ **Design letter**

⑧ **Seal class**

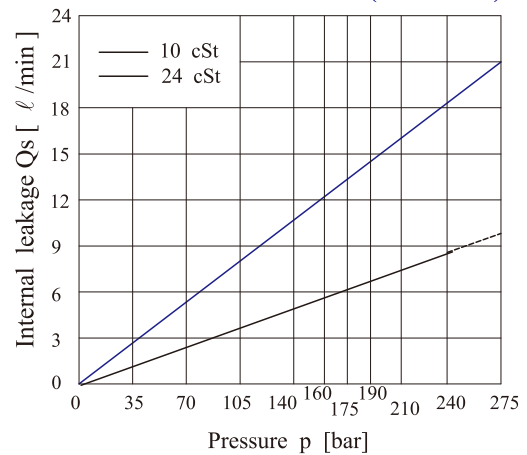
1 = S1 (for mineral oil)

4 = S4 (for fire resistant fluids)

5 = S5 (for mineral oil and fire resistant fluids)

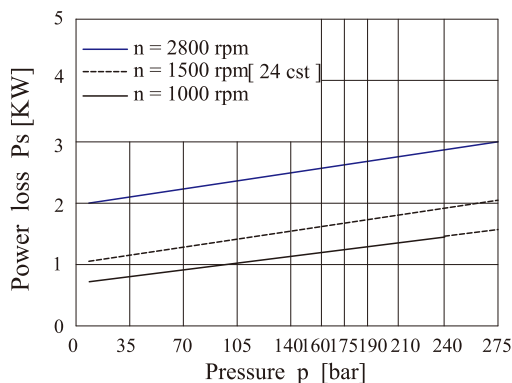
⑨ **Modifications**

INTERNAL LEAKAGE (TYPICAL)

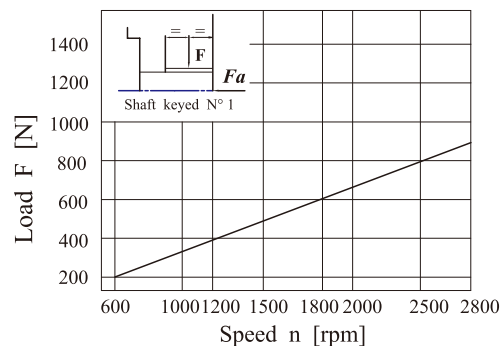


Do not operate pump more than 5 seconds at any speed or viscosity if internal leakage is more than 50 % of theoretical flow.

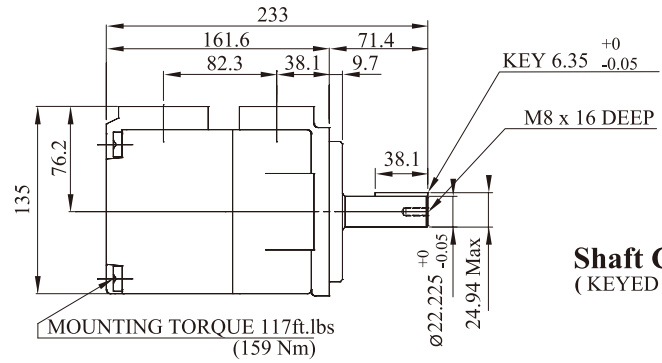
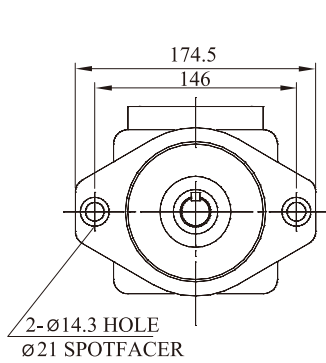
HYDROMECHANICAL POWER LOSS (TYPICAL)



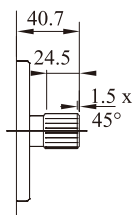
PERMISSIBLE RADIAL LOAD



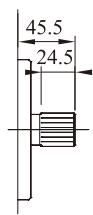
Maximum permissible axial load Fa = 800 N



Shaft Code 1
(KEYED SAE B)

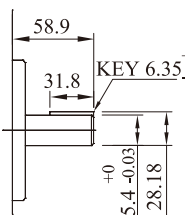


Shaft code 3
SAE B splined shaft
Class 1-J498 b 16/32
d.p. -13 teeth 30°
pressure angle flat root
side fit



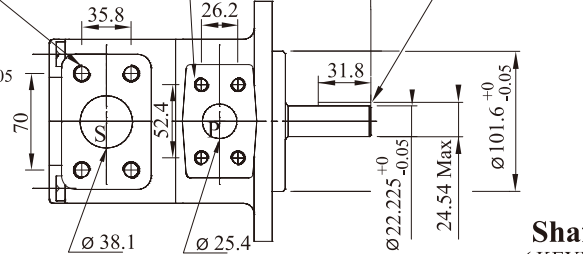
Shaft code 4
SAE BB splined shaft
Class 1-J498 16/32
d.p. -15 teeth 30°
pressure angle flat
root side fit

1/2"-13UNC x 0.88 deep-4
(M12 x 22.4)



Shaft code 5

3/8"-16UNC x 0.75 deep-4
(M10 x 19)



Shaft Code 2
(KEYED NO SAE)

Shaft torque limits(mℓ/rev x bar)		
Pump	Shaft	Vp x p max
KT6C	1	16500
	2	14300
	3	20600
	4	20600

KT6C OPERATING CHARACTERISTICS - TYPICAL [24 cSt]

Series	Volumetric Displacement Vp	Speed n [R.P.M]	Flow qve [ℓ/min]=1500rpm			Input power P [KW]=1500rpm			P Max ₂ Kg/cm ²	Max r.p.m
			p = 0 bar	p = 140 bar	p = 240 bar	p = 7 bar	p = 140 bar	p = 240 bar		
005	17.2mℓ/rev	1500	25.8	20.8	17.3	1.4	7.5	12.2	275	2800
006	21.3mℓ/rev	1500	31.9	26.9	23.4	1.5	8.9	14.7		
008	26.4mℓ/rev	1500	39.6	34.6	31.1	1.6	10.7	17.7		
010	34.1mℓ/rev	1500	51.1	46.1	42.6	1.7	13.4	22.3		
012	37.1mℓ/rev	1500	55.6	50.6	47.1	1.7	14.4	24.1		
014	46.0mℓ/rev	1500	69.0	64.0	60.5	1.9	17.6	29.5		
017	58.3mℓ/rev	1500	87.4	82.4	78.9	2.1	21.9	36.9		
020	63.8mℓ/rev	1500	95.7	90.7	87.2	2.2	23.8	40.2		
022	70.3mℓ/rev	1500	105.4	100.4	96.9	2.3	26.1	44.1		
025 1)	79.3mℓ/rev	1500	118.9	113.9	110.4	2.5	29.2	49.5		
028 1)	88.8mℓ/rev	1500	133.2	128.2	125.8 2)	2.8	32.7	48.5 2)		
031 1)	100.0mℓ/rev	1500	150.0	145.0	142.6 2)	2.8	36.5	54.4 2)		

1) 025 - 028 - 031 = 2500 R.P.M.max

2) 028 - 031 = 210 bar max. int.

Min Speed : 600 rpm