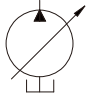
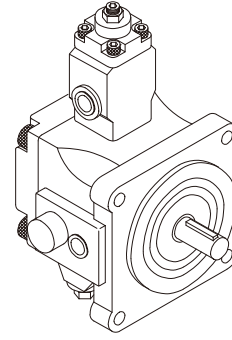


VPKCF23
VPKCF26
VPKCF30
VPKCF40



SYMBOL



FEATURES 特點

Model	Operating Pressure (Kgf / cm ²)		Rated Speed (rpm)		Net Weight
			MAX	MIN	
VPKCF23	A1: 5-18 A3:30-55	A2:15-35 A4:50-70	1800	800	9.0Kg
VPKCF26	A1: 5-18 A3:30-55	A2:15-35 A4:50-70	1800	800	9.0Kg
VPKCF30	A1: 5-18 A3:30-55	A2:15-35 A4:50-70	1800	800	9.0Kg
VPKCF40	A1: 5-18 A3:30-55	A2:15-35 A4:50-70	1800	800	9.0Kg

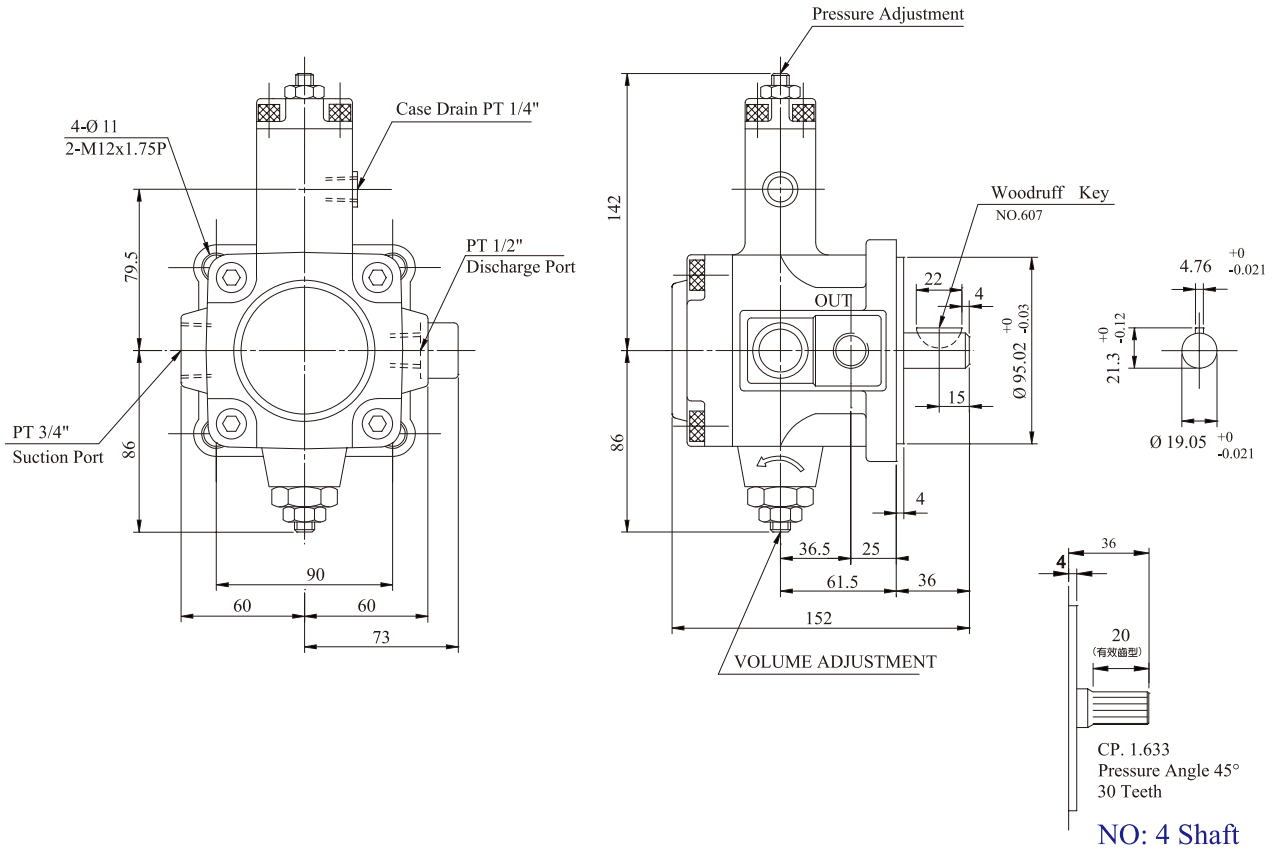
ORDERING CODE 訂購指引

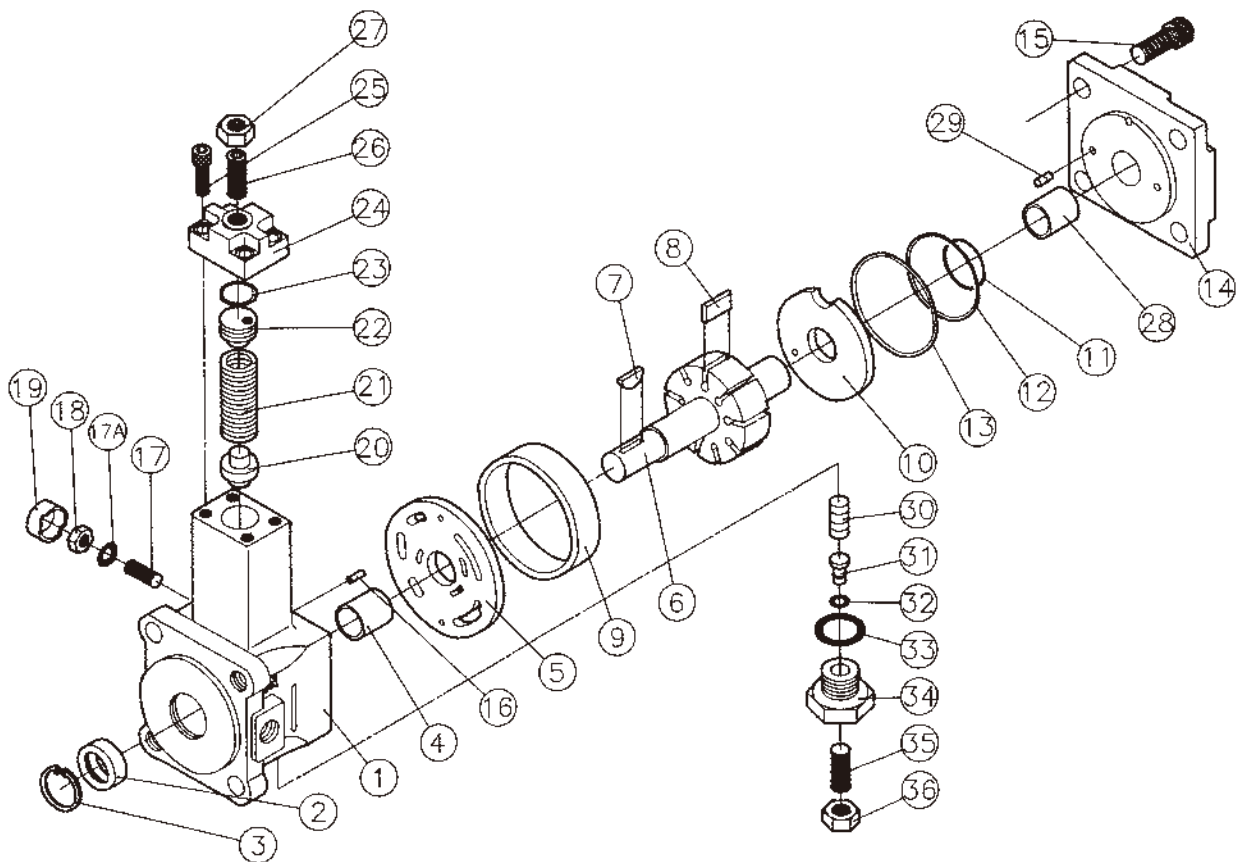
VPKC-F*A*-01-A

① ②③ ④ ⑤ ⑥

- ① — Series Number
- ② — Flange Type
- ③ — Output Flow at 1800rpm
23,26,30,40 (ℓ/min)
- ④ — Pressure Adjusting Range
1:5-18 2:15-35
3:30-55 4:50-70 (Kgf/cm²)
- ⑤ — Shaft Type
- ⑥ — Type of Suction Port & Discharge Port Type
A or No Marking: PT
B: NPT
C: SAE
D: BSP

VPKCF30





VPKC Single Pump Parts List VPKC(F23、F26、F30、F40) 系列單泵零件表

NO.1 Housing (體)	NO.19 Cap (保護蓋)
NO.2 Seal (油封)	NO.20 Piston (雙頭活塞)
NO.3 Retainer Ring (扣環)	NO.21 Spring (彈簧)
NO.4 Engine Bush (乾式軸承)	NO.22 Spring Retainer (彈簧承座)
NO.5 Port Plate A (壓力板 A)	NO.23 O - Ring (O型環)
NO.6 Rotor (轉子)	NO.24 Cover (側蓋)
NO.7 Woodruff Key (半圓鍵)	NO.25 Socket Head Cap-Screw (側蓋螺絲)
NO.8 Vanes (葉片)	NO.26 Socket Set Screw (調壓螺絲)
NO.9 Cam Ring (軸環)	NO.27 Nut (螺帽)
NO.10 Port Plate B (壓力板 B)	NO.28 Engine Bush (乾式軸承)
NO.11 O - Ring (O型環)	NO.29 Lock Pin (定位銷)
NO.12 O - Ring (O型環)	NO.30 Piston (活塞)
NO.13 O - Ring (O型環)	NO.31 Piston (活塞)
NO.14 Cover (蓋)	NO.32 O - Ring (O型環)
NO.15 Cap-Screw (上蓋螺絲)	NO.33 O - Ring (O型環)
NO.16 Lock Pin (定位銷)	NO.34 Thrust Screw (流量調整螺絲)
NO.17 Slide Screw (調中心螺絲)	NO.35 Socket Set Screw (調壓螺絲)
NO.17A O - Ring (O型環)	NO.36 Nut (螺帽)
NO.18 Nut (螺帽)	